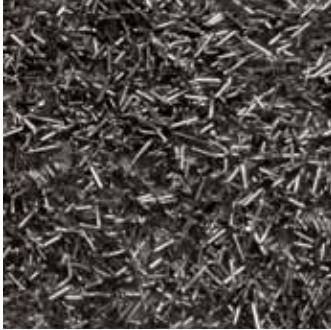


# element<sup>13</sup>Al

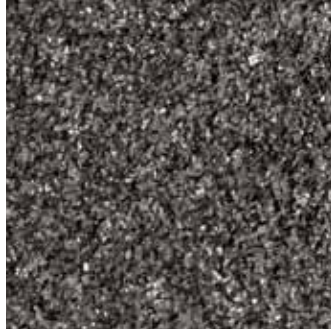
Aluminum

Available through  
**CaraGreen**  
Healthy Building Materials  
www.caragreen.com • 919.929.3009  
info@caragreen.com

## ALUMINUM



aeriAl



glaciAl



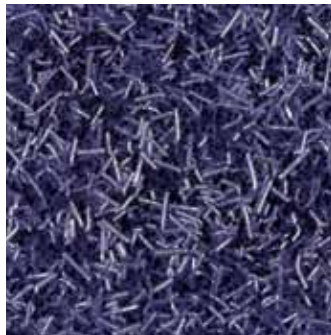
celestiAl



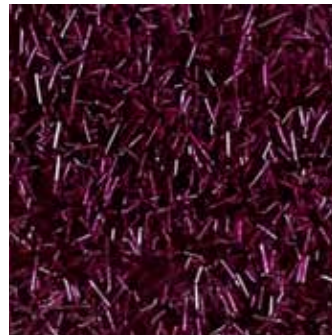
nocturnAl



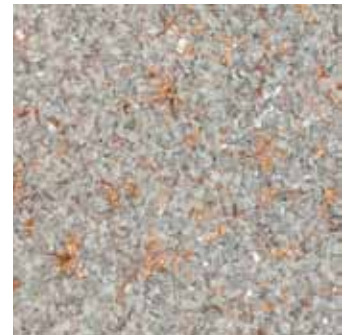
tidAl



magicAl



regAl



## COPPER

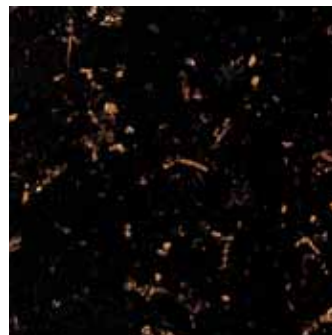
aCute



foCus



oCulus

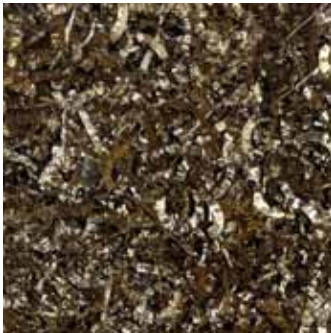


obsCure



cirCuit

## BRASS



moxie

\* Printed colors are not exact. Please call for a physical sample.



# element<sup>13</sup>Al

Aluminum

Available through

## CaraGreen

Healthy Building Materials

www.caragreen.com • 919.929.3009

info@caragreen.com

### elementAl

elementAl surfaces take us back to basics. As recycling becomes an issue, we need to find a way to launch new materials that repurpose our recycled materials. elementAl surfaces take plastic and metal from the post-consumer waste stream and meld them together into a stunning, easily machined surface that not only performs well, but offers a seamless solution to an industry problem. elementAl surfaces tell the story of the need for a more sustainable economy, in our offices and in our homes. Architects and Designers have a simple solution to a complex problem: it's elementAl.

### GENERAL INFORMATION

- Sizes: 36" x 72", 36" x 96", and 48" x 96"
- Thickness: 1/2"
- Applications include countertops, furniture, shelving, tabletops
- Cut using standard woodworking tools (refer to fabrication manual for elementAl specific techniques and guidance)
- Easily repairable
- Translucent, suitable for backlighting

### SUSTAINABILITY

- 82% recycled content
- recycled metal and recycled acrylic

